



# New Jersey Mycological Assn.

NJMA NEWS

SEPT. 1977

Volume VII

No. 9

President: Robert Peabody

Meetings: 2nd Sunday Nov. - April 1:30 p.m.  
Morris County Outdoor Education Center,  
247 Southern Blvd., Chatham, New Jersey

Editor: Dorothy Smullen

## FORAY NOTES

There were so many mushrooms at Somerset County Environmental Education Center on Aug. 14, that Dr. Ristich was constantly surrounded. The on and off drizzle didn't bother anyone. 50 different species were identified and there were many others keyed to genus. Gerry Breitenbach found an unusual species - - Marasmius ioccephalus. Sam had found it three weeks before the 14th near New Brunswick but previous to that, it hadn't been recorded in 40 years. The 5 cm cap is a dark lilac and the stem is tufted at the base with long hairs. Thank you Sam for a very successful foray and workshop.

I have heard that many new people joined leader Vic Gambino on Aug. 28 at Mahlon Dickerson. Over 30 species were identified using new ID cards supplied by Jim Richards (cards styled after those used in NAMA foray -W. Va.). Thanks to you both and all the old members who joined in assisting beginners.

## NORTHEAST SEPT. FORAY (Sept. 16, 17 and 18)

HAPPY HUNTING TO  
ALL REGISTRANTS !!

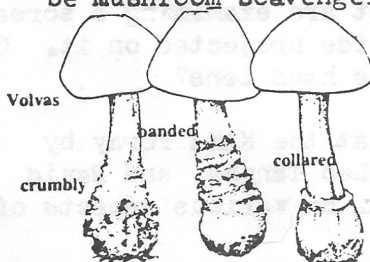
Directions to PEEC: From Interstate 80 in Penn. take exit 52 (Marshall's Creek) to Route 209 North. Follow 209 North ... at the blinking light in the village of Bushkill, check your odometer... as you approach 7 miles from the light, watch for a small wooden sign on the right side of 209N -- saying Pocono Environmental Education Center -- Make a left turn at this sign, follow the road up the hill and bear right at the "Y".

## THE TOURNE — SEPT. 25

Neal Macdonald will lead us in the park where our club held its first meeting. The Tourne is located in Boonton, N.J. The easiest access is by way of Mountain Lakes Boulevard, which is opposite "Neil's New Yorker" restaurant on Route 46, between the Cherry Hill and Denville exits of Route 80. Take Route 80 to either of these exits and procede on Route 46 continuing in the same direction from which you came. Take Boulevard North for approximately two miles. At the first fork bear left onto Elcock Ave. towards Powerville, for about two blocks. The entrance sign is on the left. Procede to the second parking lot.

## PICNIC — OCT. 2 STOKES STATE FOREST

Rain or shine and come early! Bring a covered dish - - check with leader Paul Meyer (274-3893) so there are not too many duplications. There will probably be mushroom scavenger hunts with prizes, walks, games and identification tables.



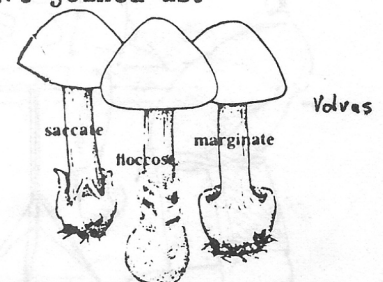
We will meet at the Kittle Field parking lot. Stokes is located in the extreme Northwest portion of the state. Take 206 North. The entrance to the park is at the Forest Office, about 5 miles from Branchville. Follow the road past the office, make the first right, and then the first left on to Coursen Road for 2 miles. The parking lot is near the ball field.

## WELCOME NEW MEMBERS

Dr. Theodore Retajczyk  
Jean Bianco  
Kenneth Kobezak  
Thomas Osaki, Jr.  
Dr. Roger Locandro

Clinton, N.J.  
Stockton, N.J.  
Ringoos, N.J.  
Philadelphia, Pa.  
Stockton, N.J.

We're glad you have joined us.



# BOOK REVIEW

By Victor Gambino

## HALLUCINOGENIC AND POISONOUS MUSHROOM FIELD GUIDE

By Gary P. Menser

And/Or Press, Berkeley CA 94702

4 7/8 x 7 1/4 \$5.95, 160 pgs. Perfectbound

This is a hip-pocket field guide which represents twenty-four hallucinogenic and eight poisonous mushroom species found in the United States. I found that the selection of mushrooms was too west coast oriented to be of actual use here. But if used with actual field collections, it can open up a new phase of mycology for those interested in this specialty.

There are 50 line drawings and 39 full color plates with photos taken by Kit Scates, Bob Harris, J.Q. Jacobs and Gary Menser. The photos are beautiful and demonstrate mushroom photography at its best, clearly deliniating each mushroom's particular features.

The text is clear and easy to follow. I found the charts and glossaries along with the sections on macroscopic and microscopic features particularly useful. It cannot be recommended for the novice mushroom hunter, for we are dealing in an extremely dangerous field of study, and this book is just too sketchy in many area.

In summary, I found HALLUCINOGENIC AND POISONOUS MUSHROOM FIELD GUIDE to be a limited but useful reference pocket guide.

## POISON GUIDE

The chart on page 3 represents some of the material contained in A Guide to the Poisonous Mushrooms in the New York Area, a booklet (45 pages) compiled by the Educational Committee of the N.Y.M.S. with the text by Gary Lincoff. Gary gave me permission to prepare the chart. If you are interested in it, you should certainly purchase the guide. It includes Rules for Safety; Descriptions and discussions; Diagrams by Bunji Tagawa; and some edible mushrooms and their poisonous look-alikes. Dedicated to the memory of Joseph Grebanier. the guide can be purchased through the New York M.S. and please include postage . the price of \$2.50 I believe -

LIBRARY DISPLAY - - I recently set up a display on three shelves of a glass cabinet in my local library. It included dried specimens, books, recipes, diagrams and information on the N.J.M.A. If your library has room for craft exhibits ask the librarian if you can show your hobby - - - Fun with fungi.

The following cartoon drawn by Neal Macdonald represents a happening at the NAMA foray in W. Va. Sam Mazzer on left and guess who on the right are examining a screen with a 35 mm slide projected on it. Can you make out the hand lens?



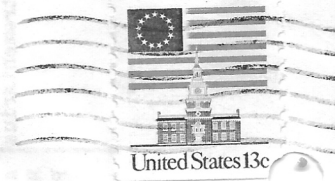
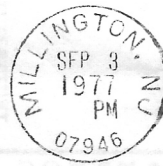
Lectures at the NAMA foray by Kent McKnight, Leo Tanghe, and David Jenkins were all on various aspects of Amanita.

Our New Jersey members made a big impression with their successful collecting and good fellowship.

POISONING TYPE	SPECIES	PRINCIPAL TOXINS	MINIMAL AMT.	TIME FOR SYMPTOMS TO DEVELOP	SYMPTOMS	DURATION	TREATMENT	FATALITY RATE
Amanita phalloides type	A. phalloides, A. verna A. virosa, A. bisporigera Galerina autumnalis, G. marginata	alpha and beta amanitin	lethal - one cap of A. phalloides or 20 G. marginata	6-24 hrs usually 10-14 hrs.	Abdominal pain vomiting and diarrhea, illness improvement; kidney and/or liver dis- function, coma	6-36 hrs. pain 12-36 hrs. improvement; ingestion to death 4-7 days	test for elevated liver enzymes SGOT and SGPT, Call Dr. Fred Bartter in Bethesda, Md. (301) 656-4000 for supply of thioctic acid	high  4-40% in Europe; few cases - US
Gyromitra esculenta	G. esculenta G. fastigiata G. brunnea G. infula Helvella lacunosa	gyromitrin and mono-methyl-hydrasine	large helping	2-24 hrs. usually 6-8	Bloating, vomiting, diarrhea, headache	2 days	see physician	low
Clitocybe dealbata	Inocybe spp. Clitocybe dealbata	muscarine	6 small caps or less	within 2 hrs.	sweating, salivating and tearing plus cramps, blurred vision, diarrhea	5-6 hrs or more	see physician or spontaneous recovery if symptoms mild	low
Amanita muscaria	A. muscaria A. pantherina A. cothurnata	ibotenic acid and muscimol	one medium mushroom	1-4 hrs.	drowsiness, then excitement mental confusion, musc. spasms, delir., then sleep	6-8 hrs or more	see physician, induce vomiting; intravenous fluids	low
Halucino-genic	Panaeolus campanulatus P. fimicola, P. solidipes P. (Psilocybe) foeniculi, Stropharia spp., Conocybe spp.	psilocybin and psilocin	ounce or less	within one hr.	hallucinations			
Gastro-intestinal	Agaricus placomyces Gantherellus floccosus Clitocybe illudens Entoloma lividum, Lepiota morrini, Paxillus involutus, Pholiotia squarrosa, Russula emetica, Scleroderma aurantium and more	unknown	modest plateful	2 hrs.	vomiting, diarrhea and/or cramps	4-6 hrs	spontaneous recovery severe cases hospitalized	low
Coprinus atramentarius	C. atramentarius, C. comatus, C. micaceus, Morchella esculenta, Polyporus sulphureus	coprine in Coprinus, possible different in other genera	modest plateful plus bottle of beer or glass of wine	promptly when taken combined	flushing, tingling in toes and fingers followed by nausea, vomiting - occas. vertigo	usually 4 hrs	recovery spontaneous	practically zero



SMULLEN



New idea

F

07961

New idea

DATE	DESCRIPTION	AMOUNT	BALANCE
9-1-77	...	...	...
9-2-77	...	...	...
9-3-77	...	...	...
9-4-77	...	...	...
9-5-77	...	...	...
9-6-77	...	...	...
9-7-77	...	...	...
9-8-77	...	...	...
9-9-77	...	...	...
9-10-77	...	...	...
9-11-77	...	...	...
9-12-77	...	...	...
9-13-77	...	...	...
9-14-77	...	...	...
9-15-77	...	...	...
9-16-77	...	...	...
9-17-77	...	...	...
9-18-77	...	...	...
9-19-77	...	...	...
9-20-77	...	...	...
9-21-77	...	...	...
9-22-77	...	...	...
9-23-77	...	...	...
9-24-77	...	...	...
9-25-77	...	...	...
9-26-77	...	...	...
9-27-77	...	...	...
9-28-77	...	...	...
9-29-77	...	...	...
9-30-77	...	...	...